

VARNA LED TB

Surface mounted or Suspended LED luminaire

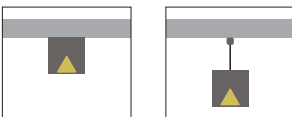


Mounting:	Directly on the ceiling Suspended - standard 1,5 m long steel suspension wires to be ordered separately - two pieces per single luminaire needed
Body material:	Aluminium profile
Colour:	Standard Gray 9006, other RAL colours on request (please add RAL code after index number)
LED module:	Philips MASTER LEDtube retrofit LED lamp
Colour temperature:	3000K, 4000K or 6500K
Colour Rendering Index (CRI)	>80 in standard
Driver:	N/A
Emergency unit:	N/A
Movement sensor:	N/A
Daylight control sensor:	N/A
Operating temperature range:	0°C... +40°C
IP Class:	IP20 in standard, IP44 on request
Power:	220-240V 50/60Hz
Lighting direction:	Direct
Light distribution:	Symmetric
Diffuser:	White acrylic diffuser [WD] in standard, acrylic frosted [AC], microprismatic [MPR] or any other on request.
General data:	5 Years standard warranty

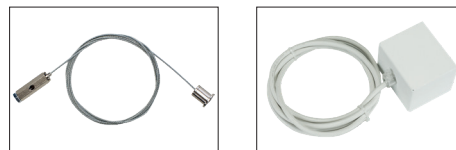


Index no.	Lumen output [lm]	Power [W]	Colour temp. [K]	CRI	Lifetime [H]	Warranty [Years]	MacAdam [SDCM]	Length [mm]	Weight [kg]
5208.2300/830	2300	16	3000	Ra > 80	50.000	5	4	1250	2,50
5208.2500/840	2500	16	4000	Ra > 80	50.000	5	4	1250	2,50
5208.2500/865	2500	16	6500	Ra > 80	50.000	5	4	1250	2,50
5208.3500/830	3500	24	3000	Ra > 80	50.000	5	4	1550	3,50
5208.3700/840	3700	24	4000	Ra > 80	50.000	5	4	1550	3,50
5208.3700/865	3700	24	6500	Ra > 80	50.000	5	4	1550	3,50

Available versions



Accessories



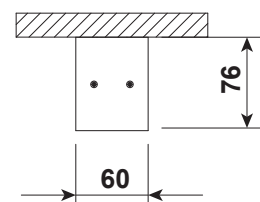
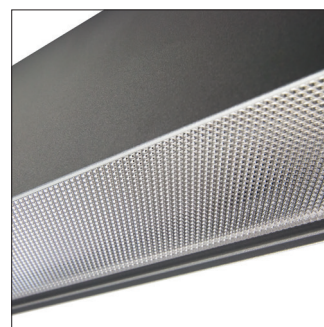
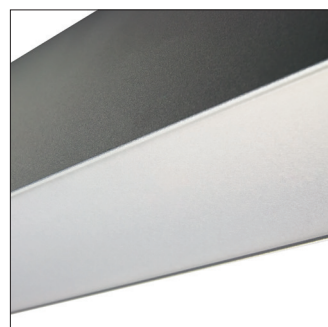
6247.15

6564.15

[WD] diffuser

[AC] diffuser

[MPR] diffuser



Luminaires can be connected into long lighting lines

All other technical features such as: Luminaire Efficacy, LOR, Lumen maintenance L/B etc. available in our pricelist

Wattage of products may vary due to constant LED efficacy improvements. Luminous flux & Luminaire Power tolerance +/- 10%.

System power consumption (LED module & driver) depends on components used